

# WHAT'S ON<sup>®</sup>

## NISEKO

IT'S FREE! YOUR ESSENTIAL GUIDE TO NISEKO — LOCAL TIPS, FOOD, APRÈS SKI, SHOPPING, ACTIVITIES, EVENTS, & MORE!

RESORT EDITION

#46

FRI, 16 DEC 2022 —  
THURS, 19 JAN 2023

IN THIS ISSUE:

## WHAT'S NEW THIS SEASON

+ 5 MINUTES WITH ISLAND SNOWBOARDS + BEST APRÈS BARS IN NISEKO  
+ LOCAL'S TIPS + WHAT'S NEW IN RESORT  
+ THE NEWBIE'S GUIDE TO SNOWBOARDING/SKIING + 2023 REAL ESTATE FORECAST + MORE!



On the cover: Photo by Toni Rodriguez / Rider: Stuart Cody / Read more on pp. 2-3

5 MINUTES WITH

5 MINUTES WITH  
**OWAIN BASSETT  
& STUART CADY**  
ISLAND SNOWBOARDS

(Left) Stuart Cady / (Right) Owain Bassett



INTERVIEW BY JACINTA SONJA / WHAT'S ON  
PHOTOS BY TONI RODRIGUEZ (COURTESY OF ISLAND SNOWBOARDS) & JACINTA SONJA

Launched in 2020, Island Snowboards is a handmade snowboard company based in the Niseko region using Hokkaido-grown wood to make snowboards designed to ride deep powder and fresh corduroy. We speak to co-owners – and long-time Niseko locals – Owain Bassett and Stuart Cady, about their amazing journey, their process, and tips to get the best out of a snowboard.



Island Snowboards has been making waves in the snowboarding scene – both in Japan and internationally. Tell us a little about how Island Snowboards came about?

**Owain (O):** I have been snowboarding for more than 30 years. I've always had a curiosity about how things are made, especially things I've spent my life dedicated to. And also, as I wasn't inspired by any snowboards out there that I wanted to ride, I thought I'd make my own. [laughter]

**Stuart (S):** I've known Owain pretty much the whole time I've lived here. It started with general conversations about snowboard designs, and how they were made. And it reached a point when Owain asked if I wanted to do it together with him.

What's unique about Island Snowboards?

**S:** The wood – locally grown 'honaki' (Magnolia obovata) and 'tamo' (Fraxinus mandshurica) – used in each snowboard is sourced from forests in central and southern Hokkaido, with every piece of timber hand-picked for its quality. The workshop where we make the boards is open to the public and time is taken to explain the design and construction elements that impact the functionality of the shape.

**O:** Our aim is to have each snowboard made with having the smallest possible carbon footprint, and designed to be ridden across a broad range of terrain. I wanted something true to Hokkaido, something that would both work well for what we needed in a snowboard, but also something native to the region.

There's soul and a story behind each of these boards...

**O:** Yes, and you'd have a real connection to the board too. The last couple of boards I bought were from a brand from Colorado, USA, and one of the reasons why I bought them was because they were making the boards themselves. It's a little like with furniture – you could buy something that is mass-produced, or you could buy something from a craftsman who made them.



(photo: Jacinta Sanja)

When did you start making the first prototype(s)?

**O:** The idea came about 8–9 years ago, and I started making them about 7 or 8 years ago. I did quite a few years of trying, testing, and prototyping, until we got to a level where we were confident that it was actually viable, and the boards were of super high standard.

I've always liked making things; I've had some experience building and working with my hands. Making snowboards was through trial and error, lots of research, and talking to people. It was a challenging journey, but I knew that if I would be able to figure it out, I'd be able to do it.



Where are your inspirations from?

**O:** All the boards we've made are basically boards that myself and the friends that I ride with would want to ride. The colours and look are inspired by my favourite artist, Mark Rothko.

**S:** We wanted to make boards that everyone can have fun on, not just for conditions here in Niseko, but if you were to take it to Europe, or North America, or Australia, it would be fun for those conditions too.

THE BOARDS



"Volume One is an all-terrain shredder with playful pop, knife-like edge-hold and a warp speed base."

ALL-TERRAIN

VOLUME ONE (2020)

Designed from experience riding Hokkaido's deepest, lightest snow, with a nod to our European big mountain heritage.

THE SHAPE

A tapered directional shape, layback camber, early rising nose and tail profiles combine to keep you afloat in the deepest powder. The progressive sidecut, Japanese woodcore, and carbon stringers give the board profile the perfectly balanced flex.



"The Deep Psych turns up the volume quite literally with an amped up shape built for effortless pow turns."

POWDER

DEEP PSYCH (2022)

Designed for the deepest days, lightest powder and most powerful flowing lines you can lay down on the mountain.

THE SHAPE

Extra length in the front, shortened tail and a layback camber give you extra drive with your front foot and a balanced ride in powder snow. Wide nose for float and heavy taper for maneuverability are paired perfectly with larger sidecut allowing for long drawn out lines and speed in open terrain.



"Built to provide extra pop through the nose and tail, this board is also right at home lapping park or launching backcountry features."

PARK / FREESTYLE

SUPernaut (2022)

Named and inspired as always by the love of music, the Supernaut is an all-mountain, multi-navigational freestyle model.

THE SHAPE

The shape has been given a slight taper, and a multi-directional nose and tail profile. A bit of extra width compared to a traditional twin for that all-important float in powder, and stability landing regular or switch.

TEST RIDE AN ISLAND SNOWBOARD!

All models are available for demo for ¥5,000 per day. Limited to 2 days at a time and subject to availability. Email / DM us to reserve your board! [contact@island-snowboards.com](mailto:contact@island-snowboards.com)



(photos: Jacinta Sanja)

Tell us about the different models you've made so far?

**S:** We've made 3 models so far – the first one was 'Volume One (2020)' – an all-mountain, all-rounder board. After that, we made 'Deep Psych' – a directional, carving powder board, and 'Supernaut' – a freestyle/park board for spins, and riding switch.

From what I've seen at the workshop, there are so many steps to making each of these boards. Tell us more about the process?

**S:** Yes, each board is made of several layers and each layer goes through a production process – the base & edges, the fiberglass, the wood core, the top sheet, as well as other elements, such as the inserts for bindings, and adding carbon stringers to enhance performance.

**O:** We use the best bases you can get for all our boards. There are some flat sections in Niseko that you'd need to be able to get through, and it's important to have a good, fast base so that you'd be able to keep your speed.

How do you describe the conditions in Niseko?

**O:** Storm riding! European riding is bigger and steeper; and you get a mix of storm conditions and periods of blue skies. Here in Niseko, it's stormy most of the time until the end of January /February. Blue-bird days do happen but you're riding in storms most of the time. It's great!

How should I select which model to ride?

**S:** You could select a board based on what you're after – what you need in a snowboard – as well as how and where you'd like to ride. We'd like to understand the customer's requirements before recommending a board. It sometimes surprises them that the board that they'd actually want, or is best for them would be different from that they had in mind or what has been recommended to them.

What's one common misconception that people have when it comes to selecting a board?

**S:** The size (length) of the board is just a guide, and not the absolute measure. There isn't a board that is too long.

**O:** Often we have a size in our minds, based on our height and weight, but there are other variables that affect the size and how it rides, way more than the number.

**S:** That having said, having a size in mind is a good starting point. Knowing where you want to ride, and how you want to ride, would also give us an indication of which board would be best for you.

Can anyone ride an Island Snowboard?

**O:** Yes! Anyone can ride an Island Snowboard. If you can link turns, you can ride an Island Snowboard.

What's the best part of making your own snowboard?

**S:** You have a say in all of the elements that go into it!  
**O:** And, of course, riding it!

THANK YOU OWAIN AND STUART!



(photo: Owen Tozer)



ISLAND SNOWBOARD LIMITED-EDITION WEAR

Tees, hoodies and beanies available for purchase in a variety of colours. Reach out at [contact@island-snowboards.com](mailto:contact@island-snowboards.com) or via Facebook/Instagram.



ISLAND-SNOWBOARDS.COM CONTACT@ISLAND-SNOWBOARDS.COM ISLAND.SNOWBOARDS 268-02 TAKASAGO, KUTCHAN, HOKKAIDO 044-0076, JAPAN

APRÈS SKI

# BEST APRÈS BARS IN NISEKO

BY WHAT'S ON

In Niseko, the après-ski party scene spans from cool cocktail bars specialising in Japanese whisky and sake, funky gin bars, to raucous pubs and karaokes, izakaya restaurants, and venues with 'live' music and DJs. The list of great party spots is extensive, but here are some to definitely check out:



## COCKTAILS

### TOSHIRO'S | NISEKO PRINCE HOTEL HIRAFUTEI, HIRAFU

17:00 – 01:00 (walk-ins only)

The winner of the Best Après-Ski venue at the Best of Niseko Award for 2 consecutive years in 2018 and 2019, Toshiro's is known for their original cocktails crafted by the experienced owner/barman, and their wide range of Japanese whiskies.

📍 TOSHIROS-BAR.COM 📞 0136-23-3377

### BAR GYU | LOWER HIRAFU 17:00 – 24:00

Also known as the 'Fridge Door Bar', Bar Gyu+ is Niseko's legendary speakeasy. This cosy bar is famous for jazzy vibes, rare whisky and cocktails that capture the flavours of Japan. Bar Gyu was recently listed in the 'World's Best 50' – Discovery category.

📍 GYUBAR.COM 📞 0136-23-1432

### MUSU | ODIN PLACE, HIRAFU 08:00 – 23:00

Musu is an all-day bistro serving breakfast and barista coffee from 08:00 to 11:00, lunch from 11:30 to 16:00 and transforming into a bustling après-ski venue late afternoon with delicious tapas dishes from 16:00 pm to 22:00.

📍 MUSUNISEKO.COM 📞 0136-21-7002

### THE BARN | LOWER HIRAFU 17:30 – 24:00

Set in a stunning building inspired by Hokkaido farm architecture, The Barn in Niseko is both a bar & restaurant, offering a great menu and a wide selection of cocktails and local craft beers. The Barn was the winner of the Best Restaurant at Best of Niseko Awards 2019.

📍 NISEKOBARN.COM 📞 0136-23-0888

### TEMPORADA | CHATRIUM, ROUTE 343 16:00 – 24:00

Local's favourite apres ski hangout, Temporada serves beer, wines, cocktails and tapas. Open for happy hour till late with regular 'live' music.

📍 TEMPORADA-NISEKO.COM 📍 TEMPORADA

## BARS

### TAMASHII | ROUTE 343, HIRAFU 12:00 – 02:00

Tamashii Bar is a popular bar with the younger ski crowd and gets packed every night. Craft beers, pool table, great bar menu, and DJ nights make Tamashii one of the best places to hang out.

📍 TAMASHII BAR 📞 0136-23-2222

Note: As a measure to reduce the risk of infection from the coronavirus, some locations are operating on reduced hours, or are closed temporarily. Do contact the individual venues for the latest updates on their schedule.



Clockwise (from top): DJs and 'live' music in Niseko; cocktails at Toshiro's Bar; and Gyu Bar (bottom right, and left)

### WILD BILLS | HIRAFU 16:00 – 02:00

Wild Bill's is one of the loudest and liveliest bars and après-ski venues in the village, and is a favourite of Niseko locals. Check their Facebook page for DJs and 'live' music events!

📍 WILDBILLSNISEKO 📞 0136-55-57745

### THE CABIN NISEKO | LOWER HIRAFU 17:00 – 23:00

Our favourite gin bar, The Cabin Niseko, is located in a funky shipping container in lower Hirafu, serving handcrafted gin cocktails and gins and from around the world, as well as take-out roast dinners for 6 this season!

📍 THECABIN.JP 📞 090-5982-9768

### NISEKO TAPROOM | ODIN PLACE, HIRAFU 17:00 – 11:00

Try the best beers from Hokkaido's craft breweries, such as Niseko Brewing, Hop Kotan, North Island, Onuma, and Otaru Brewery, as well as their famous Rotisserie Chicken and bar menu.

📍 NISEKOTAPROOM.COM 📍 NISEKOTAPROOM

### OTSUKISAMA & BAR MOON | LOWER HIRAFU 17:00 – 24:00

Legendary local's bar with chill atmosphere and a great vibe. Popular with the ski crowd and Niseko locals alike, especially for after hours drinks and their famous ramen.

📍 BARMOON.OTSUKISAMA / 📍 0136-23-2265

## WINE

### LOUNGE BAR BY PARK90 | SETSU, MIDDLE HIRAFU

16:00 – 23:00

With established wine bars in Singapore & Taipei, Park90 offers a bespoke wine experience for wine lovers with Park90's extensive selection of over 300 wines specially curated through their network of partners, negotiants and chateaux around the world.

📍 PARK90.COM/JP 📞 0136-55-7791

### THE LOCAL | EXPLORE, HIRAFU 15:00 – 20:30

Located beside the Explore Activity Centre (behind Rhythm Summit) The Local is a casual wine bar with a cool vibe.

📍 EXPLORE-NISEKO.COM 📍 EXPLORENISEKO

## DJS AND CLUBS

### POWDER ROOM | LOWER HIRAFU 19:00 – 02:00

Powder Room is the most exclusive and posh after-hours club in Niseko, a regular hang out of international celebrities, socialites and supermodels. A favourite place for après-ski drinks, champagnes, cigars and late-night parties.

📍 POWDERROOMNISEKO.COM 📍 POWDERROOM NISEKO

\*Opening hours could change through the season, do check for updates.

SHOPPING

# GEAR UP FOR WINTER

BY WHAT'S ON

Wondering how to look your best in the snowy season? We've put together a selection of stylish winter essentials.



01

### SEASON EQPT FORMA SNOWBOARD 2022 | Rhythm ¥110,000 (+ tax)

The Forma, developed with a setback stance, elongated nose, and more width to increase the ability to float and plane in fresh powder snow.

📍 RHYTHMJAPAN.COM



02

### ARC'TERYX SABRE ANORAK | Rhythm ¥82,500 (+tax) N80p-X 3L GORE-TEX delivers waterproof, windproof, breathable protection and has a flannel backer for light insulation.

📍 RHYTHMJAPAN.COM



03

### SMITH 4D MAG GOGGLES | Zaka ¥51,700 (+ tax) The Smith 4D MAG brings our widest field of view and sharpest opticsto give you the best possible read on the terrain, so you can nailyour line every time.

📍 RHYTHMJAPAN.COM



04

### MONCLER CERNIAT JACKET | Zaka ¥302,500 (+ tax) Smart design, performance and supreme warmth characterize the Cerniat ski Jacket from the Moncler Grenoble collection for men.

📍 ZAKANISEKO.COM



05

### MONCLER APRES TRAIL HIGH | ZAKA ¥97,900 (+ tax) Comfort meets performance and a clear Moncler aesthetic in the Trailgrip Après snow boots for men.

📍 ZAKANISEKO.COM



06

### MONCLER ARMONIQUE JACKET | ZAKA ¥312,400 (+ tax) Crafted from technical materials, the Armonique short down jacket for women is designed to support performance and add style to the slopes.

📍 ZAKANISEKO.COM



07

### THE NORTH FACE NISEKO SOUVENIR HOODIE | The North Face Gravity ¥13,200 (w/ tax)

The North Face Gravity Niseko limited-edition hoodie keeps you warm in the colder months. Take one home as souvenir, it makes a great gift too!

📍 GOLDWIN.CO.JP



08

### BEANIE | Lots of Powder ¥5,400 (w/ tax) This stunning beanie is knitted in a sumptuous wool mix in a size that fits everyone comfortably.

📍 LOTSOFPOWDER.COM



09

### THE NORTH FACE NUPTSE BOOTIE WP IV SHORT | The North Face Gravity ¥17,200 (+ tax) Thermal and waterproof unisex winter boots with waterproof membrane inserts. Equipped with an adjuster cord that prevents snow from entering. Available in black, blue and brown.

📍 GOLDWIN.CO.JP

COFFEE

# OUR FAVOURITE BARISTA COFFEE

BY WHAT'S ON | PHOTOS BY JACINTA SONJA

Niseko's thriving coffee scene has undergone nothing short of a revolution the past few years. The resort is home to some of the best coffee in Hokkaido – from local roasters, independent specialist cafes, to mobile coffee trucks. Here are some of our favourites:



Mountain Kiosk Coffee



Rhythm & Beans



Sprout Outdoor Espresso



% Arabica Niseko

**SPROUT OUTDOOR ESPRESSO** HOURS: 08:00 – 19:00  
Local coffee institution Sprout Outdoor Espresso is located in front of Kutchan Station on Kutchan Ekimae Dori. Sprout roasts its own blend of beans daily. Bonsoy and regular soy milk available.

📍 KUTCHAN EKIMAE DORI (STATION STREET)  
🌐 SPROUT-PROJECT.COM

**GREEN FARM CAFE** HOURS: 07:00 – 20:30  
One of our favourite all-day cafes in Hirafu, Green Farm roasts its own coffee under Black Powder Roasting Co. on site. Soy milk available.

📍 1F CHATRIUM NISEKO, HIRAFU  
🌐 GREENFARM CAFE

**RHYTHM & BEANS COFFEE** HOURS: 08:00 – 18:00  
Often referred to as "the best coffee in town", Rhythm & Beans serves premium Allpress coffee at its stands at Rhythm Hirafu and Rhythm Base. And stop by Rhythm Base for a delicious Espresso Martini for an après drink. Soy and almond milk available.

📍 RHYTHM SUMMIT & RHYTHM BASE  
🌐 RHYTHM AND BEANS COFFEE

**% ARABICA NISEKO** HOURS: 08:00 – 17:00  
% Arabica Coffee is the first Japanese speciality coffee franchise to open in Niseko. % Arabica Niseko uses its original blend of beans and single-origin beans from Ethiopia. Soy, oat and almond milk available.

📍 HIRAFU188  
🌐 ARABICA NISEKO HIRAFU188

**MOUNTAIN KIOSK COFFEE** HOURS: 07:00 – 17:00  
Mountain Kiosk Coffee, a popular hangout at the Hirafu Welcome Centre, serves coffee made with Ethiopian and Guatemalan beans roasted by Takano Coffee (Niseko, Japan) Soy milk available.

📍 NEXT TO GRAND HIRAFU WELCOME CENTRE  
🌐 MOUNTAIN KIOSK COFFEE

**THE POW BAR** HOURS: 08:00 – 16:00  
Cool vegetarian/vegan cafe in Niseko town. Pow Bar uses beans roasted by Yokoi Coffee for its house blend. Soy, oat, almond & coconut milk available.

📍 OPPOSITE NISEKO VIEW PLAZA  
🌐 THE POW BAR

**KOKO** HOURS: 08:00 – 17:00  
Grab one of Koko's fresh, in-house baked bread and pastries, and pair it with their famous Salted Caramel Latte using beans from Mitsumoto Coffee. Soy milk available.

📍 2F ODIN PLACE, HIRAFU  
🌐 KOKONISEKO.COM

**CAFE CUBANOS** HOURS: 08:00 – 19:00  
Conveniently located along Route 343, Cafe Cubanos is a funky cafe a Cuban twist that serves toasties, cinnamon donuts and All Press coffee. Soy milk available.

📍 CORNER OF ROUTE 343 & MOMIJI ST  
🌐 CAFECUBANOS.JP

... & FOR GREAT JAPANESE DRIP COFFEE:  
**TAKANO COFFEE** HOURS: 12:00 – 18:00  
Takano Coffee is one of the best roasters in the area. Their quaint cafe in Arishima specialise in traditional French press and drip coffee using freshly roasted single-origin and coffee blends. Plant-based milk not available.

📍 ARISHIMA, NISEKO  
🌐 WWW.TAKANO-COFFEE.COM

LOCAL'S TIPS

## MY KONBINI WINTER FAVOURITE

We asked the locals what their favourite konbini (convenience stores) snacks for winter are. Here are their top picks:

BY WHAT'S ON



**HENRY JOHNSON** | Takumi Woodwork  
My favourite konbini bite:  
**BACON & EGG ONIGIRI** | 7-Eleven (¥230 + tax)

"The perfect combination of East meets West – a pocket-sized all-day breakfast ready for all occasions. Brunch on the run, from right out of bed, to the trailhead!"



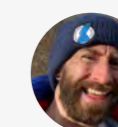
**KIYOE HOSOKAWA** | Kiyoe Gallery  
My favourite konbini bite:  
**LOTTE YUKIMI DAIFUKU & GLICO ALMOND MILK** | Any konbini  
(Daifuku ¥140 + tax / Almond milk ¥111 + tax)

"Yukimi daifuku is made of mochi and vanilla ice cream – such a clever invention! The almond milk is good for health. I like this compact size!"



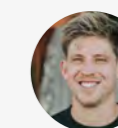
**SCOTT WENTWORTH** | 59 Niseko  
My favourite konbini bite:  
**PANCAKES WITH SYRUP AND MARGARINE** | 7-Eleven (¥93 + tax)

"Who has time in the morning to make pancakes on a powder day. Put 'em in your pocket and eat them on the first lift of the day!"



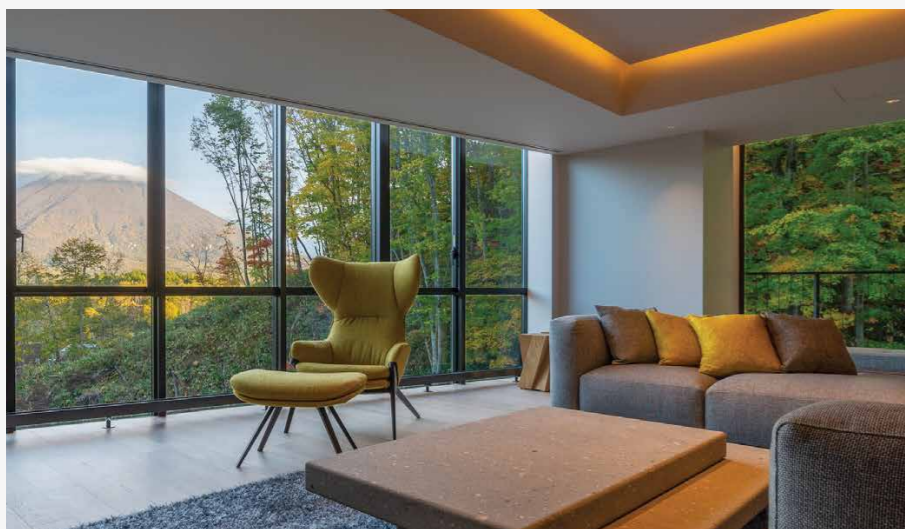
**TOM MORTIBOY** | Coursebase / Niseko Area Mountain Bike Association (NAMTBA)  
My favourite konbini bite:  
**NONGSHIM SHIN RAMEN & FRESH GROUND BLACK COFFEE** | 7-Eleven  
(noodles about ¥600 for 3 / Coffee (L) ¥180 w/ tax)

"My personal fave konbini black coffee. These cheeky Korean noodles are tasty, pretty damn spicy by Japanese standards, and accidentally plant based!"



**LOUIS HIGGINS** | Takumi Woodwork  
My favourite konbini bite:  
**THICK PORK CUTLET AND EGG SANDWICH** | Lawson (¥418 + tax)

"I like eggs and I like pork Katsu. Don't ask for the ingredients of the secret sauce or you'll be taken in the back room!"



12 luxury onsen apartments  
in the heart of Hirafu



YAMA KEI  
RESIDENCES

🌐 yama-kei-residences.com ✉ stay@yama-kei-residences.com

## THE BLACKBOARD

BY EXPLORE NISEKO

16 DEC 2022 – 20 JAN 2023

#CHOOSEYOURADVENTURE

SNOW SHOE TOUR  
FROM ¥7,500 P/P

PRIVATE OTARU DAY TOUR  
FROM ¥10,000 P/P

GUIDED SNOWMOBILING  
FROM ¥12,000 P/P

IN-ROOM PRIVATE YOGA  
FROM ¥12,000

ONSEN TOUR  
¥4,000 P/P

HALF-DAY SKI GUIDE  
FROM ¥40,000

PRIVATE AIRPORT/RESORT  
TRANSFERS  
FROM ¥36,000 P/VEHICLE



🌐 EXPLORE-NISEKO.COM  
☎ 050-5309-6905  
✉ ACTIVITIES@EXPLORE-NISEKO.COM

SCAN TO WIN!  
ORDER A BOTTLE OF WINE & STAND A CHANCE TO WIN A 6-NIGHT HOLIDAY IN 2023/24 FOR 4 IN NISEKO & RUSUTSU WORTH ¥1,000,000!  
\*10 DEC 2022 – 10 MAR 2023

# UNWIND AFTER A DAY ON THE MOUNTAIN

GOOD WINE  
GOOD FRIENDS  
GOOD VIBES

OPEN 15:00 TO 20:30 DAILY  
LOCATED INSIDE EXPLORE NISEKO ACTIVITY CENTRE, MIDDLE HIRAFU

★ THE LOCAL ★  
APRES WINE BAR

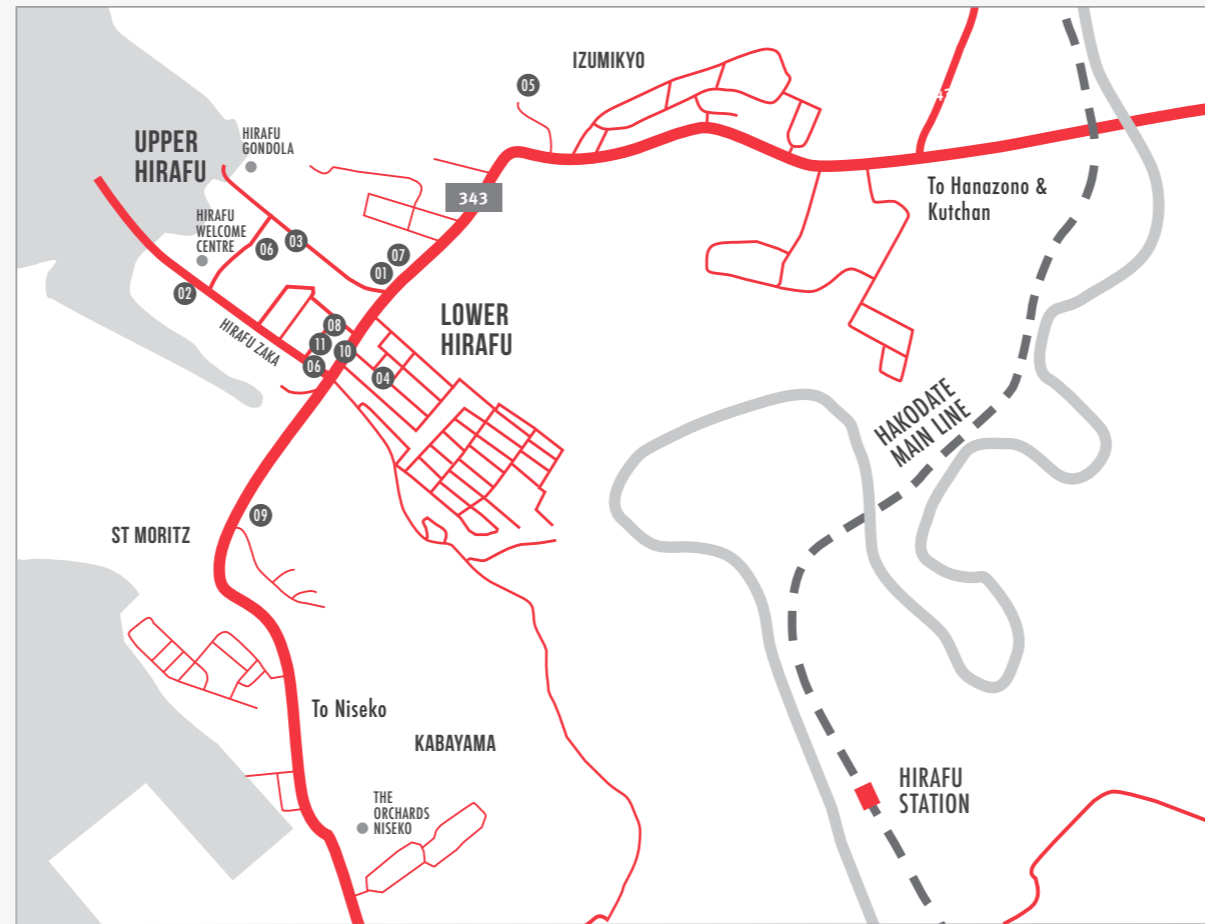
WHAT'S NEW

WINTER 2022/23

# WHAT'S NEW IN RESORT

BY WHAT'S ON

This winter, there are plenty of exciting new openings – from new dining venues in and around Hirafu to speciality shops and services in Kutchan. As the town grows, venues are opening up farther afield – in Hanazono, Annupuri, Niseko Town, bringing more diverse food and retail options. Here are a couple of new places for you to check out this season:



## AROUND HIRAFU

### 01 SETSU NISEKO | ROUTE 343

Open for reservation  
One of the most anticipated hotel openings in Niseko, Setsu Niseko (by SC Global) features a collection of 190 luxury hotel suites, natural mineral onsen, a spa, a fully equipped gym, and yoga studio. It also offers dining options, such as *méli mélo -Yuki no Koe-*, *AFURI Ramen+Dumpling*, *Sushi Kato INORI*, *Tempura Araki*, and *Lounge Bar by Park90*.

📍 SETSUNISEKO.COM 📱 SETSUNISEKO

### 02 SANSUI NISEKO | UPPER HIRAFU

Open for reservation  
SANSUI NISEKO is a boutique hotel located in Upper Hirafu with dining options such as *Sushi Shin by Miyakawa* (Niseko restaurant of Sapporo's Michelin three-star *Sushi Miyakawa*), *Dining by LUPICIA*, and *LUPICIA Boutique*.

📍 SANSUINISEKO.COM 📱 SANSUINISEKO

### 03 HAKUSTEAK @ HAKU VILLAS | UPPER HIRAFU

18:00 – 22:00 (Friday – Tuesday)  
Located at luxury accommodation *HakuVillas*, *HakuSteak*, headed by Chef Luiz, celebrates the seasons of Hokkaido with a menu inspired by its rich tapestry of culture and environment. This season, the restaurant features *The HakuSteak Modern Kaiseiki Menu*.

📍 HAKULIFE.COM/HAKUSTEAK 📱 HAKULIFE

### 04 MAME | LOWER HIRAFU opens late January 2023

17:00 – 23:00  
*MAME niseko* is a new Japanese fusion restaurant headed by chef Hideki Endo, former chef at the famed *NOBU* restaurant in Hong Kong, and owner Nobuyuki Matsuhsa's restaurant, *Matsuhsa Paris* in Paris.

📍 MAME-RESTAURANTS.COM / 📱 MAME NISEKO

### 05 BISTRO RE ARBOR | IZUMIKYO

11:00 – 15:00 / 17:00 – 21:00  
*Re Arbor's* dishes feature a contemporary twist and an eclectic menu, incorporating seasonal and local products from around Mt Yotei.

📍 IZUMIKYO.CO.JP / 📞 0136-55-6603

### 06 RHYTHM SUMMIT & RHYTHM BASE | HIRAFU

08:00 – 20:00 (daily in winter)  
Now known as *Rhythm Summit*, the iconic store on Hirafuzaka has been renovated and is now completely dedicated to retail. *Rhythm Base* (near Hirafu Gondola) stocks the world's most reputable ski and snowboard brands for customers to both rent and buy.

📍 RHYTHMJAPAN.COM / 📞 0136-23-0164

### 07 YOGA STUDIO EN | SETSU NISEKO, ROUTE 343

08:00 – 20:00 (daily in winter)  
*Studio En* is a grounding space located at *Setsu Niseko*. *Studio En* offers a range of different yoga classes and styles for those who are completely new to yoga and those who have an established practice.

📍 SETSUNISEKO.COM/EN/Wellness/STUDIO-EN

### 08 ARIGATO MASSAGE | HIRAFU & AYA NISEKO

12:00 – 21:00 (by appointment)  
*Arigato Massage* offers a variety of oil, relaxation massage, and nail treatments.

📍 ARIGATO-NISEKO.COM 📞 (HIRAFU) 0136-23-2511 / (AYA) 0136-23-46881

### 09 NISEKO NANIWATE / INTUITION, KABAYAMA

17:30 – 22:00 (by reservation only)  
Located on 1F at *Intuition Niseko*, *Niseko Naniwate* serves *kaiseki* style meals using local ingredients.

📍 ROBATA-NANIWATE.COM 📱 ROBATA.NANIWATE

### 10 TAJ MAHAL | ROUTE 343, HIRAFU (NEW BRANCH)

11:30 – 22:30  
The newest addition to the *Taj Mahal* group of restaurants, *Taj Mahal Hirafu* offers a variety of authentic, mouth-watering Indian cuisine, such as *Chicken Tikka Masala*, *Lamb Rogan Josh*, *Sag Paneer*, and *Cheese Garlic Naan*. Vegan and gluten-free options are available.

📍 TAJMAHALGROUOP.COM 📱 TAJMAHALGROUP

### 11 EXPLORE & THE LOCAL WINE BAR | HIRAFU

Explore 10:00 – 20:00 / Bar 15:00 – 20:30  
The new *Explore Activity Booking Centre* and *The Local wine bar* are located behind *Rhythm Summit*. Come say hello!

📍 EXPLORE-NISEKO.COM 📱 EXPLORENISEKO

## BEYOND HIRAFU (OUTSIDE OF MAP)

### 12 PARK HYATT NISEKO | HANAZONO

Open for reservation  
*Park Hyatt Niseko* in Hanazono is the quintessential year-round luxury mountain resort. Dining options include: *The Lounge & Bar*, *Olivio*, *China Kitchen*, *Molière Montagne*, *Sushi Mitsukawa*, and the *Deli* (*Pierre Hermé's* luxury patisserie)

📍 HYATT.COM / 📱 HYATT

### 13 NEW GONDOLA, NISEKO HANAZONO | HANAZONO

Winter calendar  
*Hanazono Resort* has unveiled its brand-new 10-person gondola, and has opened up new beginner run as well as night skiing terrain. The resort's main chairlift *Hana#1* has hooded, heated leather, 6-seater chairs.

📍 HANAZONONISEKO.COM 📱 HANAZONONISEKO

### 14 NISEKO DISTILLERY | ROUTE 5

10:00 – 17:00  
Founded by *Hakkaisan Brewery*, *Niseko Distillery* produces whiskey and gin right here in Niseko. Tours of the distillery are available (advanced reservation is required) There is also a tasting bar and a select shop that carries a variety of sake, beer, spirits, and Japanese crafts (free admission).

📍 NISEKO-DISTILLERY.COM 📱 NISEKODISTILLERY2021

### 15 ICOR NISEKO | ROUTE 5

10:00 – 17:00 (closed Wed)  
*ICOR Niseko* is a shop and café located in a sinuous building designed by renowned architect *Go Hasegawa*. You are able to purchase *ICOR* skin care products and healthy snacks and drinks at the cafes.

📍 ICOR.JP 📱 ICOR NISEKO

### 16 J'AI LA PATATE | ARISHIMA (NEW LOCATION)

11:30 – 13:30 / 18:00 – 19:30 (closed Wed & Thurs)  
Same awesome food in a new location. Inspired by French cuisine, the name of our restaurant, *J'ai la patate*, means liveliness in French.

📍 PATATE.HOKKAIDO.JP 📱 J\_PATATE

### 17 ICHI ICHI KITCHEN | SOGA, NISEKO

11:00 – 15:00 / 17:30 – 22:00  
The menu is curated by internationally recognised chef *Jonas Stadtländer*, who combines global influence with local Hokkaido ingredients to bring you the best in creative cuisine.

📍 ICHIICHIKITCHEN.COM 📞 090-4052-0011

### 18 THE POW BAR MARKET SECTION | NISEKO

08:00 – 17:00 (closed Wed & Thurs)  
At the new *Pow Bar market*, you will find organic vegetables bought directly from Japanese farmers along with specialty products and ingredients recommended by the *Pow Bar* team. The cafe serves vegetarian/vegan menu, baked sweets and coffee.

📍 THEPOWBAR.COM / 📱 THEPOWBAR

### 19 SHIGUCHI & SOMOZA | HANAZONO

Open for reservation  
*Shiguchi* comprises 5 beautifully-renovated *kominkas* on a mountain ridge within a privately owned estate in the heart of *Niseko Hanazono*. It is located adjacent to *Somoza* – a cultural hub with a gallery, shop, cafe and restaurant, offering an array of seasonal Hokkaido produce prepared by Chef *Ozeki Tatsuya* housed in a 150-year-old *kominka*.

📍 SHIGUCHI.COM 📱 SHIGUCHI.NISEKO

### 20 LUCKY FINGERS | ANNUPURI

18:00 – 23:00  
*Luckyfingers* is a relaxed and comfortable mountainside restaurant & bar, serving *izakaya* fare with a hint of Italian essence. *Yuuki Sasaki*, a talented chef from Tokyo's hidden Italian gem, "*Vini di Arai*" and his team will welcome you this winter.

📍 LUCKYFINGERSNISEKO.COM 📱 LUCKYFINGERSNISEKO

### 21 LODGE 401 | ANNUPURI

17:00 – 22:00  
Helmed by chef *Rhys Hartigan*, *Lodge 401 bar* serves a delectable bar menu, and a wide selection of cocktails, whiskies and spirits.

📍 LODGE401.COM 📞 0136-55-5382

### 22 THE YARD NISEKO | KUTCHAN

Open Wed 11:00 – 17:00 / Thurs – Sat 11:00 – 21:00  
The *Yard* is a community recreation space offering healthy food, fresh juice, skate park sessions, yoga and fitness classes, community events and workshops, and more.

📍 THEYARDNISEKO.COM 📱 THEYARDNISEKO

### 23 59 NISEKO | KUTCHAN

By appointment  
*59 Niseko* is a professional tattoo studio owned and operated by local tattooers with over 20 years of tattooing experience. *59 Niseko* offers expert traditional tattooing, black and grey or full color.

📍 59NISEKO 📞 070-1511-1751

### 24 SHIRABESHI-YA | DCM HOMAC, KUTCHAN

9:30 – 20:00  
The market section at *DCM Homac* in *Kutchan* is now relaunched as *Shirabeshi-ya* – a '*michi-no-eki*' shop selling local fruit & vegetables, as well as *omiyage* (souvenirs) from *Kutchan* and the *Niseko* area.

📍 SHIRIBESHI-YA.HOKKAIDO.JP 📱 SHIRABESHIYA



St Moritz Development Blocks | JPY 98,000,000 | | 5 minutes' drive to lifts | Land 990 m<sup>2</sup> (Approx. 299.475 Tsubo)

## OWN THE DREAM



NEW WEBSITE  
LAUNCHED SUMMER 2022!  
100+ LISTINGS & MORE ON  
NISEKOPROPERTY.COM

**Niseko Property**  
REAL ESTATE SALES & LEASES

CONTACT US TODAY!  
nisekoproperty.com  
sales@nisekoproperty.com  
+81 (0)136 21 5060

## 2023 REAL ESTATE FORECAST

AS 2022 DRAWS TO A CLOSE, GRANT MITCHELL OF NISEKO PROPERTY MAKES SENSE OF NISEKO'S REAL ESTATE MARKET FOR 2023 AND BEYOND.

BY WHAT'S ON | FEATURE BY NISEKO PROPERTY

(RIGHT)  
YAMA SHIZEN WEST 302 | UPPER HIRAFU |  
CONDOMINIUM | ¥99,000,000  
3 BEDROOMS, 2.5 BATHROOMS | FLOOR: 120.86 SQM



With Japan's borders opening up, the property market looks to be entering a new phase — especially with big-name international brands dotting the landscape in Niseko. We speak with Grant Mitchell of Niseko Property to find out how the market has shifted, especially over the past few years, and what's hot in Niseko right now.



**HOT BUY OUTSIDE NISEKO: RUSUTSU DOWNTOWN LAND**  
RUSUTSU | LAND | 19,855,000 JPY  
656.37 SQM (APPROX. 198.55 TSUBO)

**Q. I'D LIKE TO OWN A SKI HOLIDAY PROPERTY IN NISEKO. WHAT ARE THE BEST OPTIONS FOR A PROPERTY THAT COULD ALSO GENERATE SOME RENTAL YIELD?**

A: The best opportunities exist in condominiums that are either older ski-in ski-out properties, such as Alpen Ridge, or high-quality properties further from the lifts but still within walking distance, such as Yama Shizen. Away from Hirafu, houses in areas on the edge of resorts offer solid yields.

**Q. WHICH PROPERTIES ARE BEST TO INCLUDE IN MY INVESTMENT PORTFOLIO?**

A: Without a doubt, commercial and residential buildings in Kutchan town with gross yields of up to 10% surpass the yields of approximately 2% common in resort areas.

**Q. SHOULD I BUY AN OLDER PROPERTY AND RENOVATE OR BUILD FROM SCRATCH?**

A: This very much depends on personal taste and budget. New build and renovation costs are very similar, so the property has to be one worth renovating. We see more demolition than renovation projects, except in Kutchan town where it's often more prudent to renovate cheaply than rebuild as owner and tenant expectations are lower than in the resort areas.

**Q. THE QUESTION ON EVERYONE'S MIND – WHAT'S BEEN HAPPENING THE PAST 2 YEARS, AND HOW HAS THE PANDEMIC AFFECTED THE PROPERTY MARKET?**

A: While overall sales volume went down, prices remained firm and even appreciated in many areas around the resort due to continued strong demand. We are expecting, and are in fact already seeing, the market to come back with a vengeance with the weak yen, abundant powder, and open borders.

**Q. PROPERTY VALUES IN NISEKO'S REAL ESTATE MARKET HAVE BEEN ON AN UP-TREND OVER THE LAST TEN YEARS. HAVE WE MISSED THE BOAT?**

A: We are just in the infancy of Niseko's development, and there is a lot more potential for growth. Hirafu still maintains its luxury resort appeal, with the fastest rising property prices, but there has been increasing interest in properties in the other Niseko ski areas and in Rusutsu. With the shinkansen coming to Kutchan Town in less than 10 years, properties there have been high on some investors' lists of priorities. The town's array of amenities, reasonably-priced older houses, and strong yields make it particularly attractive.

**Q. WHAT SHOULD WE BE LOOKING TO BUY THIS SEASON?**

A: Property values are rising, so virtually any type of property is a good proposition. The value of properties on the outskirts of the main resort areas is likely to increase rapidly in the next year or so. In particular, Kabayama, Outer Hirafu, Soga (near Niseko Village), and Moirwa would be worth a closer look.

### OUR TOP PICK おすすめ!



**RIDGELAND | KABAYAMA | LAND**  
690,000,000 JPY  
LAND 38,660.72 SQM (APPROX. 11,694.95 TSUBO)

The site is on an elevated ridge and boasts 360-degree panoramic views of Mt Yotei, the ski mountain, other mountain ranges and the countryside. Located just 8 minutes away by car to Hirafu and Niseko Village ski areas, the land opens off a picturesque side road and is bordered by alpine forest and farmland.

The considerable development potential includes a boutique hotel and multi-villa residential subdivision. Opportunities like this are very rare, so move now to secure this stellar property.

### 📧 SUBMIT YOUR QUESTION!

If you'd like your real estate questions answered in the next issue of What's On Niseko, do email us at: [whatson@explore-niseko.com](mailto:whatson@explore-niseko.com) before 5 Jan 2023 (we'll pick the best ones to be answered!)

**Niseko Property**  
REAL ESTATE SALES & LEASES  
nisekoproperty.com



Photo: Jacinta Sonja

## THE ULTIMATE NEWBIE SKIING/ SNOWBOARDING GUIDE

BY WHAT'S ON | FEATURE BY EXPLORE NISEKO

Learning a new sport and skill is always exciting, but it can be daunting at the same time. We've put together some of the most asked questions at the Explore Activity desk, and some handy hints on how to make your first time on the mountain a fun one.

### 01. WHAT SHOULD I WEAR?

It's always good to wear layers on and off the mountain. You'd have the option of removing a layer or two. As you'd be moving a lot on the mountain, you'd be surprised how warm you'd get. We recommend a good Gore-tex outerwear jacket and waterproof pants/bibs to keep you dry and warm.

**Tip:** Don't forget good, waterproof gloves – poor-quality gear will mean cold and wet hands.

### 02. SHOULD I START WITH SNOWBOARDING OR SKIING?

You could consider the options depending on your background: surfers and skaters might like the idea of snowboarding. Rollerbladers might find skiing more appealing, but ultimately is a good idea to try both. Learning both increases your awareness of the mountain, and which you'd end up liking better might actually surprise you!

**Tip:** We'd recommend giving either skiing and snowboarding more than one go, or giving it at least 3 days each to get a real feel for them.

### 03. SHOULD I RENT SKIS/SNOWBOARD EQUIPMENT OR IT IS OK TO USE A FRIEND'S?

For first-timers on the mountain, it is important to get properly fitted as it would affect your mountain experience and safety. You could consult the professional team at the rental stores, such as Rhythm, or check with your instructor to make sure that the equipment you have is good for you.

**Tip:** Do allow a couple of hours ahead to get fitted out and collect your equipment. If your lesson starts at 8 am, it'd be best to collect your equipment the night before.

### 04. SHOULD I GET LESSONS?

It is always good to get a solid foundation in any new sport, and we'd highly recommend get an instructor for your first ski/snowboard experience.

**Tip:** More than just learning the basic skills, an instructor would guide you through the differing terrain in Niseko, varying snow conditions, and safety measures on the mountain.

### 05. ARE WE ABLE TO RIDE ON THE CHAIR LIFT?

Once you're comfortable on your snowboard/skis and able to start and stop, it'd be a real experience going up the mountain on the chair lift or the gondola. Go with someone who's familiar with the mountain. Head for the Green or Family Run to start.

**Tip:** Lift tickets are sometimes not included in the lesson package, so it would be good to check with the ski school.

### 06. WHAT ARE SOME THINGS TO DO AFTER A DAY ON THE SLOPES?

There are lots of great après-ski options in Niseko. You could go for an onsen and massage, grab an après drink (and hot chocolate for the kids), taste some of Niseko's best food options, and hang out with the locals at a bar in the evening. And in true Niseko style, it's 'Ride, Rest, Repeat'!

**Tip:** Buy a bottle of wine at The Local Wine Bar (at Explore Activity Centre behind Rhythm Summit) and stand a chance to win ¥1,000,000 worth of holiday prizes!

EXPLORE-NISEKO.COM / 050-5309-6905 / ACTIVITIES@EXPLORE-NISEKO.COM



**Private airport transfers and tours throughout Hokkaido**

**EXPLORE TRANSFERS & TOURS**  
explore-niseko.com

**EdVenture**  
Snow Activities for your children!

Enjoy off mountain activities & lessons for ages 3-12 (transport included)

**Kids Movie Night**  
@ THE ORCHARDS NISEKO

**3 DEC – 1 MAY / PARK HYATT NISEKO**

**THE NORTHERN SILENCE - PHOTOGRAPHY EXHIBITION BY RUJIPART**  
PARK HYATT NISEKO HANAZONO RESIDENCES, 1F

Photographer, Rujipart, will take you to serenity in Hokkaido's unique character of nature, landscape, and powerful yet adorable native wildlife from his perspective.

WWW.TABLECHECK.COM/EN/SHOPS/PARKHYATT-NISEKO-LOUNGE/RESERVE @ PARKHYATTNISEKO

**14 DEC – 31 MAR / PARK HYATT NISEKO**

**LIVE MUSIC FROM LAS VEGAS**  
PARK HYATT NISEKO HANAZONO, 18:00 – 22:15

Live performance by Daniel Park - America's Got Talent Season 7 top 100 debut in Japan at The Lounge & The Bar Park Hyatt Niseko.

WWW.TABLECHECK.COM/EN/SHOPS/PARKHYATT-NISEKO-LOUNGE/RESERVE @ PARKHYATTNISEKO

**WHAT'S ON NISEKO**

**8 JAN 2023**

Submission Deadline

**LIST YOUR EVENT FOR FREE!**  
ISSUE #47: 21 JAN – 31 MAR 2023  
WHATSONNISEKO.COM/LIST-YOUR-EVENT

**-31 DEC / NAC CENTRE**

**CLIMBING MEMBER'S PASS**  
AT NAC NISEKO ADVENTURE CENTRE

Purchase your special member's climbing pass before 31 Dec 2022 for only ¥19,000 (valid for 4 months). Niseko Indoor Climbing Gym opening hours 11:00 – 20:00. Other benefits: Free rental (shoes, harness, chalkback) & Mountain Gear Shop discount!

NACADVENTURES.JP @ NAC.ADVENTURES

**17-31 DEC / SANSUI NISEKO**

**JAPANESE CULTURE-THEMED EVENTS**  
DAILY FROM 17-31 DEC, 16:00-18:00

Sansui Niseko proudly hosts a series of Japanese culture-themed events, such as calligraphy and origami workshops, as well as 'live' koto, and gagaku performances to welcome and entertain guests.

\*advance booking for some events may be required

SANSUINISEKO.COM @ SANSUINISEKO

**16 DEC – 19 JAN / THE LOCAL WINE BAR**

**FRIDAY HAPPY HOUR**  
THE LOCAL WINE BAR, FRIDAYS 15:00 – 18:00

Join us at The Local for Friday Happy Hour from 15:00 – 18:00! Special prices on wines & complimentary bar snacks.

EXPLORE-NISEKO.COM @ EXPLORENISEKO

**10 DEC – 26 FEB / SHU OGAWARA MUSEUM**

**64TH ROKUSAIKAI ART EXHIBITION**  
SHU OGAWARA MEMORIAL MUSEUM

The 64th Rokusaiikai Exhibition provides a glimpse into the current state of art in Hokkaido. Recent works by 25 artists will be shown, including work by 89 year old local calligraphy artist Yoko Arano.

TOWN.KUTCHAN.HOKKAIDO.JP @ 0136-21-4141

**17 DEC – 25 FEB / HANAZONO NISEKO RESORT**

**11 NIGHTS OF FIREWORKS**  
HANAZONO SLOPE, SATURDAYS, ~19:00

Hanazono's night sky will be more spectacular this season! Come and enjoy the fireworks while night skiing! Or, watch them from inside a gondola or a restaurant!

\*time may vary, do check Hanazono's website for details

HANAZONONISEKO.COM @ HANAZONONISEKO

**22 DEC / THE YARD NISEKO**

**HO! HO! CHRISTMAS YOGA FLOW**  
AT THE YARD NISEKO, 19:00 – 20:00

Join us for our Ho! Ho! Christmas Flow... a festive themed flowy Vinyasa Yoga class. To really get you in the Holiday spirit, Christmas fancy dress is encouraged, think Santa hats, reindeer ears, Olaf costumes, the more the merrier.

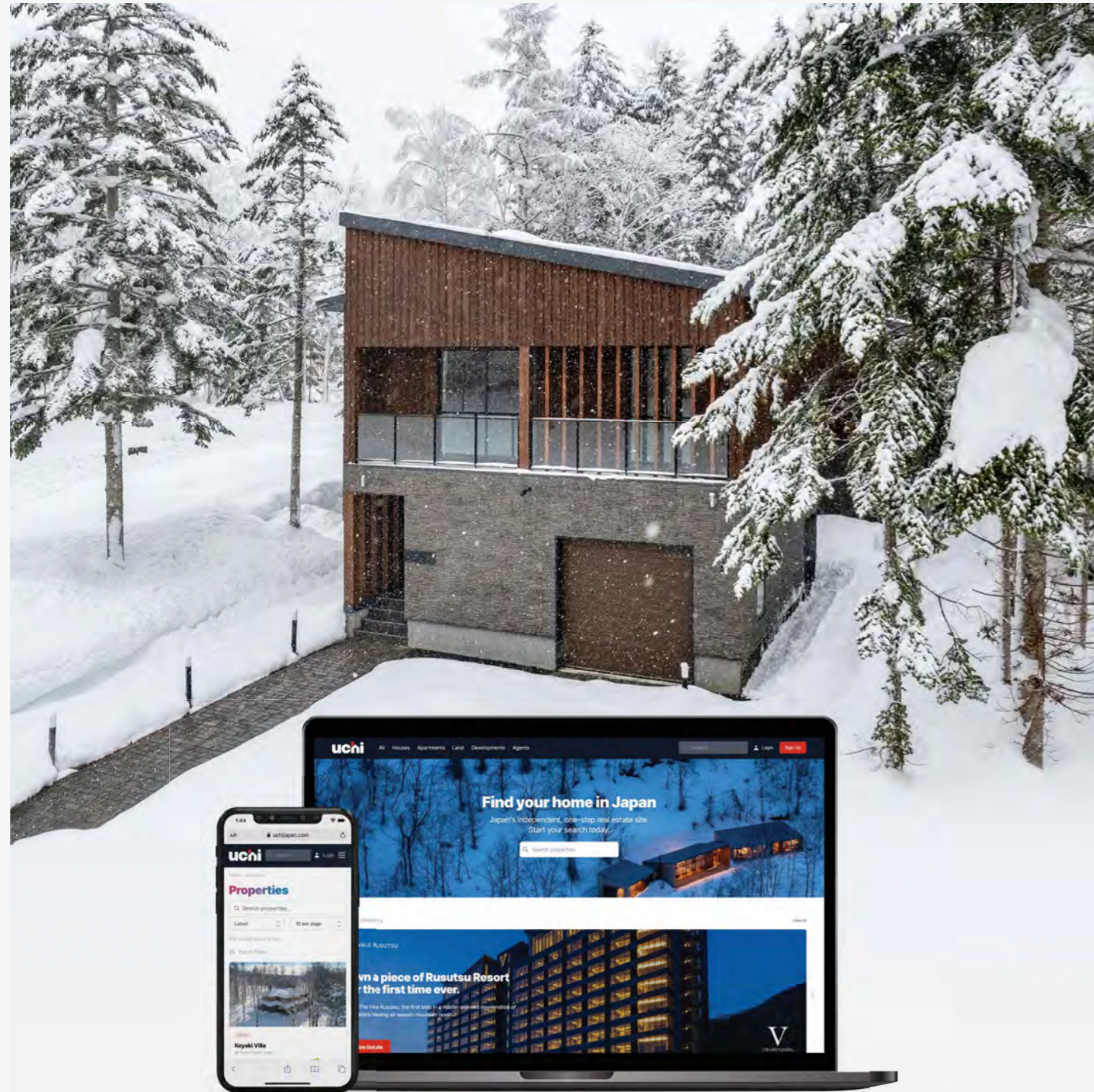
THEYARDNISEKO.COM @ THEYARDNISEKO

**Nikota Realty** provides bespoke real estate consulting services in Japan for sophisticated offshore investors and homebuyers focusing on **Tokyo, Niseko and the Nagano area.**

**Nikota REALTY**  
TOKYO NISEKO HONG KONG

Tel: +81-3-5288-7866  
Email: enquiry@nikotarealty.com

Nikota Realty is a division of Nikota Capital



## Find your dream resort home in Japan with Uchi.

Browse hundreds of the best resort real estate opportunities in Japan with Uchi's lightning-fast search engine.

Join hundreds of owners and list your property on Japan's premium resort listing site.

Visit [uchijapan.com](http://uchijapan.com) now to learn more.



[uchijapan.com](http://uchijapan.com)



Find your home in Japan

**24 & 25** DEC / THE LOCAL WINE BAR 🍷  
**CHRISTMAS APRÈS MULLED WINE**  
 THE LOCAL WINE BAR, FROM 15:00  
 Spice up your Christmas with a glass of traditional mulled wine! Available from 15:00.

🌐 EXPLORE-NISEKO.COM 📱 EXPLORENISEKO

**01** JAN / NISEKO VILLAGE 🌟  
**NEW YEAR SUNRISE GONDOLA**  
 AT NISEKO VILLAGE, 06:15, TICKET SALES 06:30  
 In Japanese tradition, watching the first sunrise of the year, or "hotsu hinode" will bring you good luck. Head up to the mountain and watch the sunrise to start your new year. Adult ¥1,500, Child (Ages 7-12) ¥1,000. Note: no skiing allowed.

🌐 NISEKO-VILLAGE.COM / 📱 NISEKOVILLAGE

**10** JAN ~ / HALF NOTE BAR 🍷  
**TRIVIA NIGHT EVERY SUNDAY**  
 AT HALF NOTE BAR, FROM 19:30  
 Trivia Night - Tower of Sapporo for the winning team!

🌐 NISEKOFULLNOTE.COM/HALF-NOTE  
 📱 NISEKOHALFNOTE

**24** DEC / HANAZONO NISEKO RESORT 🌟  
**SANTA MEET AND GREET 2022**  
 NEAR THE BIG CHRISTMAS TREE, 15:30  
 Santa Claus is coming to Hanazono on Christmas Eve! If you have been good all year long, you might get a present from him! (First 200 arrivals, small good children only.)

🌐 HANAZONONISEKO.COM 📱 HANAZONONISEKO

**6** JAN ~ / NISEKO TOURISM 🌟  
**NISEKO SHOOTOUT PROAM PHOTO CONTEST**  
 AT NISEKO, STARTS ON 6 JAN 2024  
 Winter season long #NisekoShooutout Instagram Contest begins on 6 Jan 2023. World Famous Skiers/Riders/ Shooters to Judge 2022-23

🌐 NISEKOTOURISM.COM/SHOOTOUT  
 📱 NISEKOSHOOTOUT

**14** JAN / PARK HYATT NISEKO 🌟  
**NISEKO MUSIC FESTIVAL**  
 PARK HYATT NISEKO HANAZONO KABANOKI LODGE, 18:30  
 Internationally acclaimed musician, composer, and artistic director, Richard Tognetti, returns to Niseko with members of the Australian Chamber Orchestra for a special performance.

🌐 NISEKOMUSICFESTIVAL.ORG 📱 MNK.NISEKO

**31** DEC / GREEN LEAF NISEKO VILLAGE 🌟  
**JAZZ BAND LIVE MUSIC**  
 THE GREEN LEAF NISEKO VILLAGE 1F, 18:00 ~  
 'Live' jazz band at the Green Leaf Niseko Village, 1F. Free entry

🌐 THEGREENLEAFHOTEL.COM 📱 NISEKOVILLAGE

**7** JAN / THE YARD NISEKO 🧘  
**THE YARD YOGA BRUNCH**  
 AT THE YARD NISEKO, 8:00 (SIGN IN 7:45)  
 We will begin with a Vinyasa Flow Yoga session to warm up your body, build strength and increase flexibility. After Yoga we will relax in our café and enjoy a yummy healthy brunch all together. (V, VG) ¥3,750 (¥2,750 for season pass holders)

🌐 THEYARDNISEKO.COM  
 📱 THEYARDNISEKO

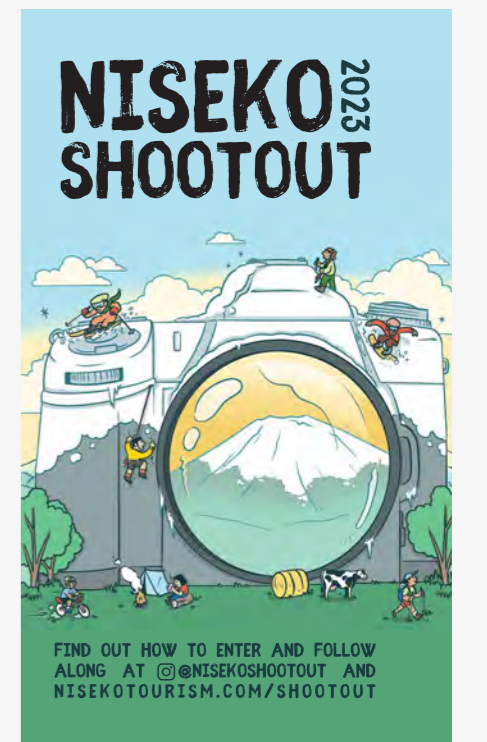


**31** DEC / HILTON NISEKO VILLAGE 🍷  
**TOSHI-KOSHI SOBA (NEW YEAR SOBA)**  
 HILTON NISEKO VILLAGE 23:00 - 24:00  
 Enjoy Toshikoshi Soba (年越しそば) at the Hilton Niseko Village on New Year's Eve. Made from buckwheat, Toshikoshi Soba is traditionally eaten on New Year's Eve (December 31) for good luck. Menu prices.

🌐 NISEKO-VILLAGE.COM/EN/HILTON-NISEKO-VILLAGE  
 📱 NISEKOVILLAGE

**8** JAN ~ / HALF NOTE BAR 🌟  
**OPEN MIC NIGHT EVERY THURSDAY**  
 AT HALF NOTE BAR, 19:00 - 22:00  
 Come show us your talents from 19:00 onwards. Bar opens from 18:00 for some Dutch courage. We have guitars, bass, a double bass, piano and a drum kit!

🌐 NISEKOFULLNOTE.COM/HALF-NOTE  
 📱 NISEKOHALFNOTE



**31** DEC / THE LOCAL WINE BAR 🍷  
**NYE CHAMPAGNE ON ICE**  
 THE LOCAL WINE BAR, FROM 15:00  
 Start the party at The Local Wine Bar with champagne on ice!

🌐 EXPLORE-NISEKO.COM 📱 EXPLORENISEKO

**10** JAN ~ / HALF NOTE BAR 🌟  
**BOOZY BINGO EVERY WEDNESDAY**  
 AT HALF NOTE BAR, FROM 20:00  
 Bingo with a twist, get ready to dance and win some awesome prizes!

🌐 NISEKOFULLNOTE.COM/HALF-NOTE  
 📱 NISEKOHALFNOTE



# LIMITED EDITION! Explore Niseko Swag

## SALE 20% OFF!

EXPLORE NISEKO SWAG

\*UNTIL 31 MARCH 2023

\*LIMITED STOCK AVAILABLE

WOMEN'S  
AND MEN'S  
HOODIES AND  
T-SHIRTS  
AVAILABLE!



VISIT THE EXPLORE ACTIVITY BOOKING CENTRE IN  
HIRAFU (BEHIND RHYTHM SUMMIT) TO VIEW  
OUR COLOUR RANGE AND SIZE OPTIONS